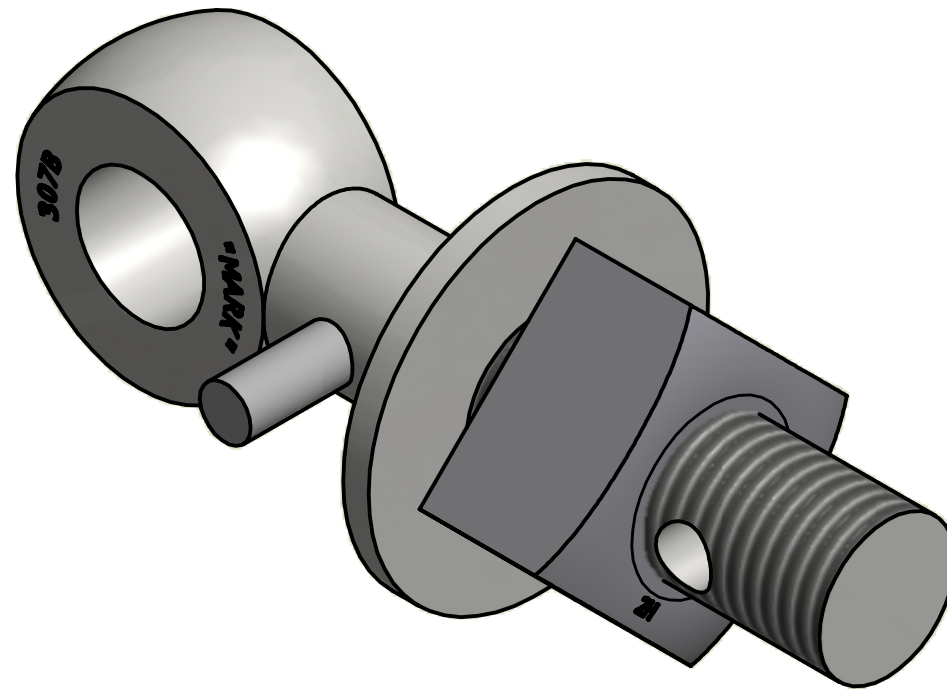
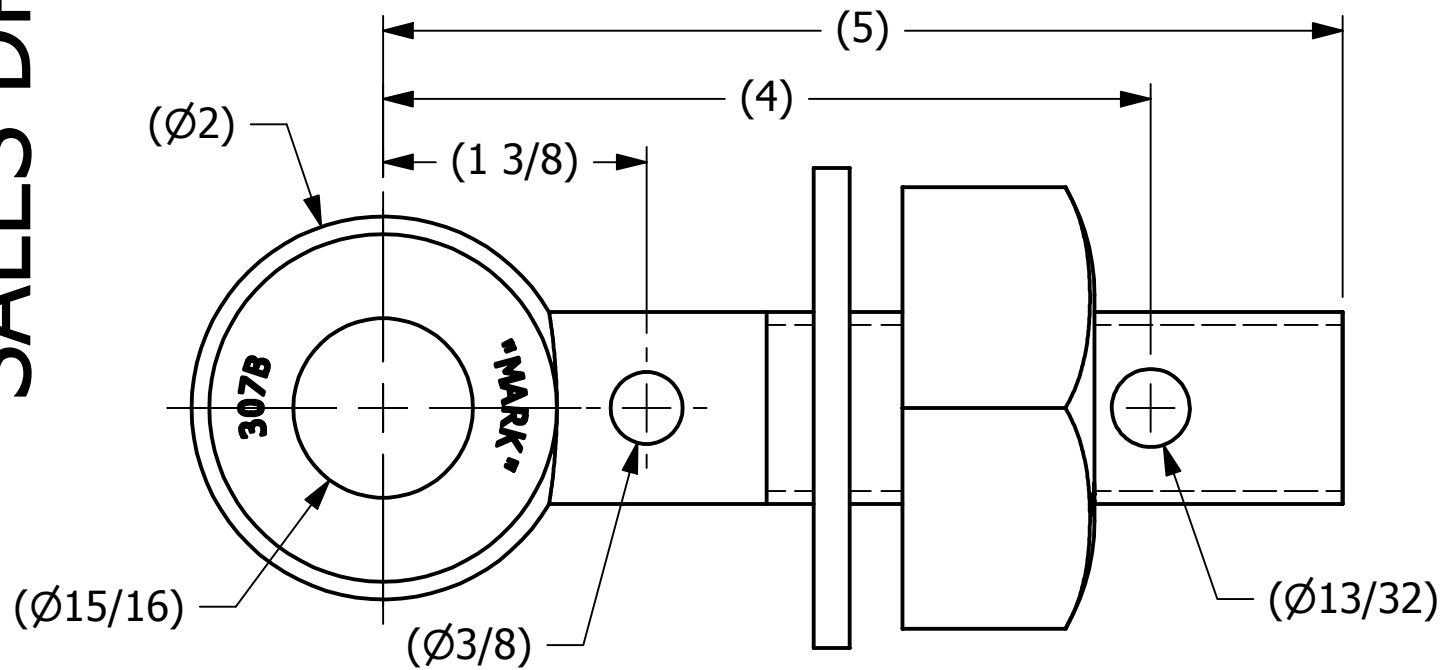
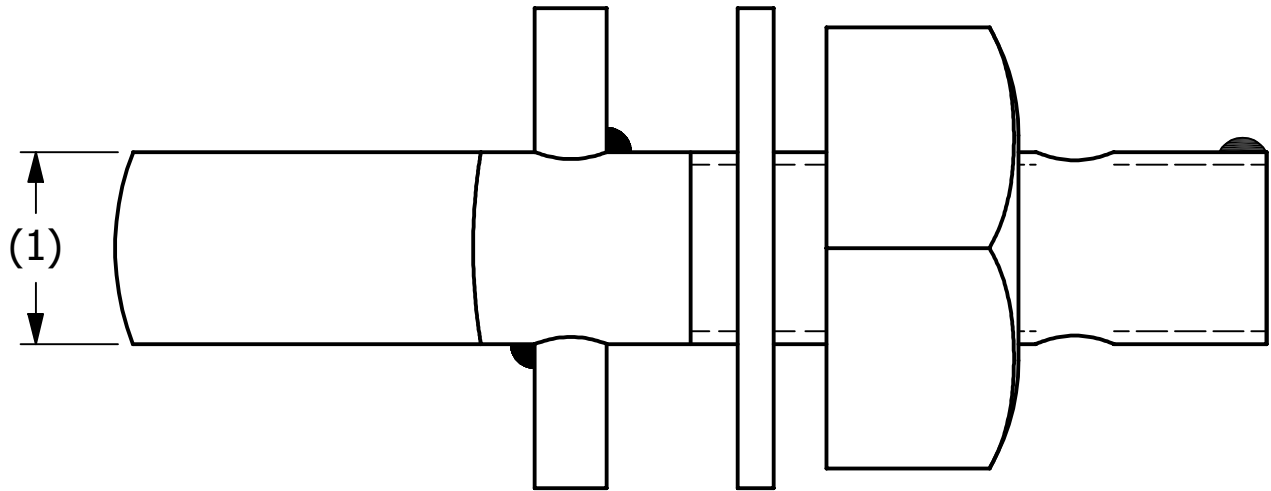


SALES DRAWING

SALES DRAWING



ISOMETRIC VIEW

B	RJP	6-3-15	UPDATED TO CURRENT STANDARDS	
A	CHL	4-25-01	REPLACED WASH1 WITH WASH1P	
REV	BY	DATE	DESCRIPTION	
<div><div><div></div><div>SALCO PRODUCTS, INC.</div></div></div>				
PART NAME: EYEBOLT ASSEMBLY 1"X5"				
MATERIAL: CARBON STEEL				
PROJECT #:			SHEET #: 1 OF 1	SCALE: 1:1
DRAWING #:		PART #:		
B13416		EB15HAP		

UNLESS OTHERWISE SPECIFIED DIMENSIONAL TOLERANCES FRACTIONAL: $\pm 1/16$ X.XX: $\pm .03$ X.XXX: $\pm .015$ ANGULAR: $\pm 1^\circ$ DEBURR ALL SHARP EDGES. ALL MACHINED SURFACES TO HAVE A 125 RMS FINISH UNLESS NOTED OTHERWISE. THIRD ANGLE PROJECTION	DRAWN BY:	FOD
	CHECKED BY:	SAB
	PROTOTYPE BY:	FOD
	PROTOTYPE DATE:	5/10/1999
	APPROVED FOR PRODUCTION BY:	SAB
PRODUCTION DATE:		5/10/1999

THIS PRINT, PROPERTY OF SALCO PRODUCTS INC., CONTAINS PROPRIETARY INFORMATION AND MUST NOT BE COPIED, REPRODUCED, OR USED DETRIMENTALLY TO OUR INTEREST.